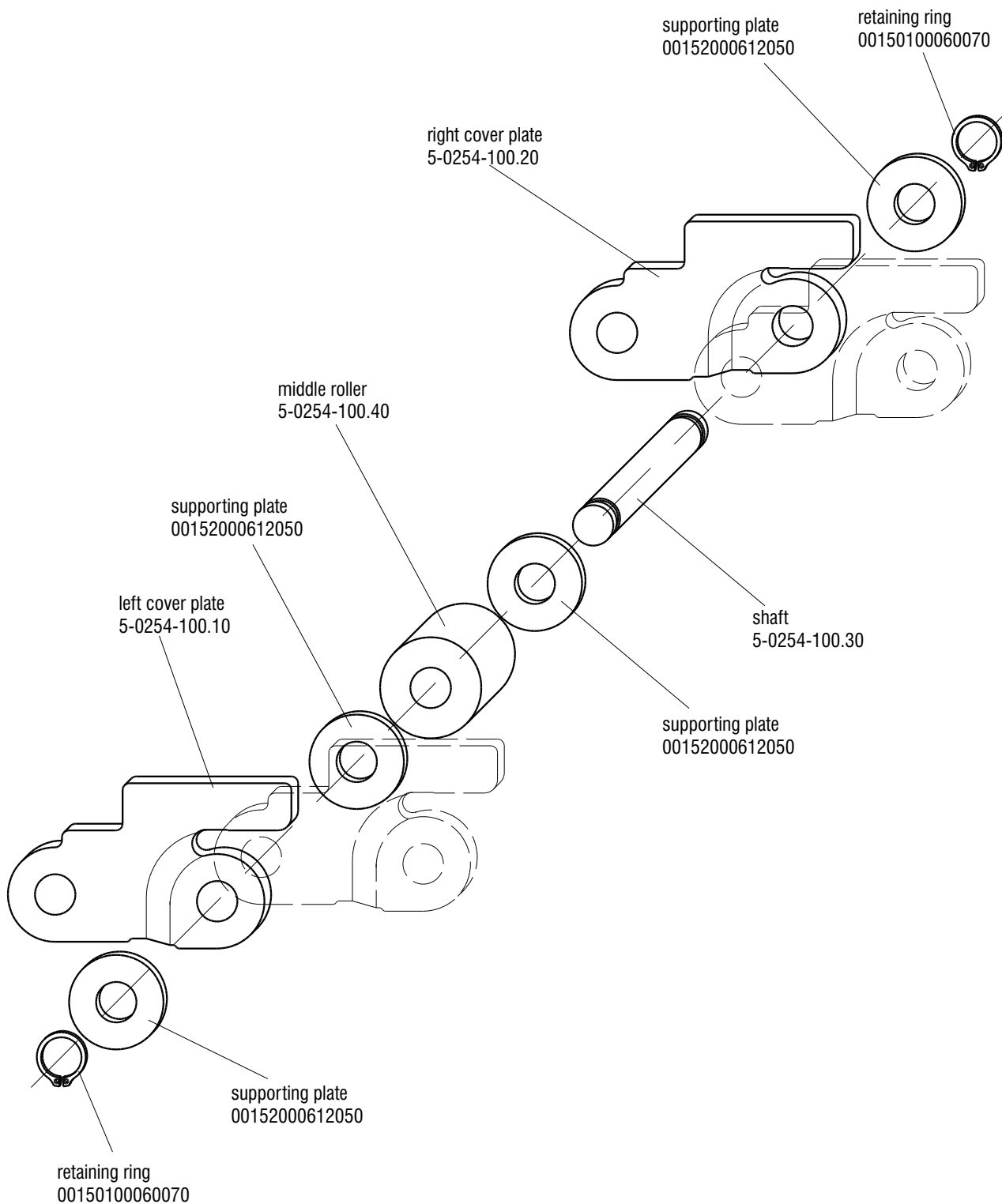




# Push chain 0254

## Type 25 G I

### 2.1.4 Assembly of the standard chain link 5-0254-100.00



D5-215e/10.04

Subject to technical changes

Framo - Morat KG (GmbH & Co.)  
Framo -Antriebstechnik

Po.-box 10 • D-79869 Eisenbach / Hochschwarzwald  
Höchst 7 • D-79871 Eisenbach / Hochschwarzwald  
Homepage: <http://www.framo-morat.com>

Tel. (07657) 88-0 • Fax (07657) 88-333  
E-Mail: [info@framo-morat.com](mailto:info@framo-morat.com)