

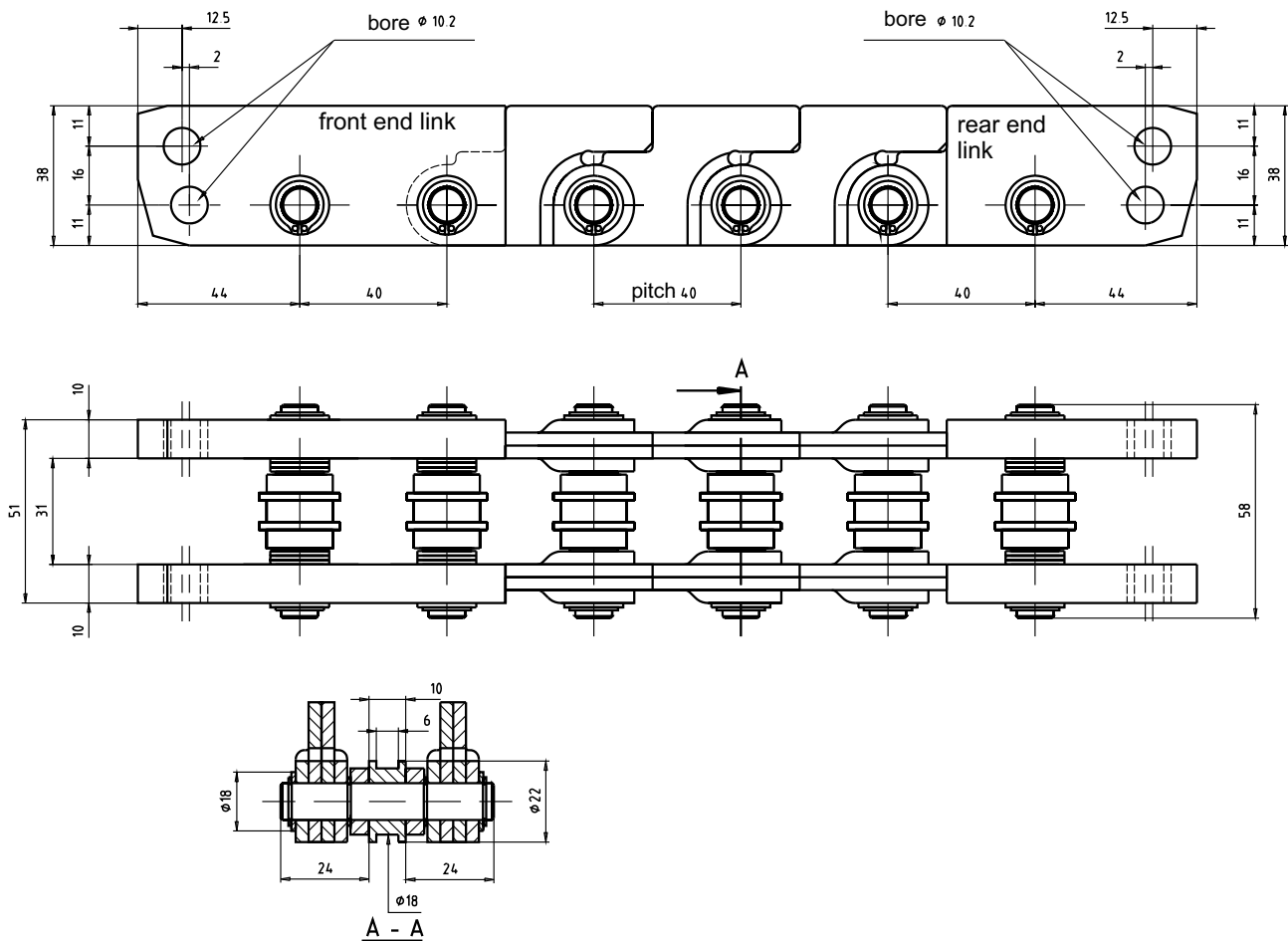
# Push chain 0403

## 3.3 Type 40 PSR

### 3.3.1 Technical data

- max. push force (for 1 meter of chain unguided, load guided): ..... 11000 N
- weight per meter:..... 6,7 kg
- number of links per meter: ..... 25

### 3.3.2 Dimensions



D5-224e/10.04

Subject to technical changes

Framo - Morat KG (GmbH & Co.)  
Framo -Antriebstechnik

Po.-box 10 • D-79869 Eisenbach / Hochschwarzwald  
Höchst 7 • D-79871 Eisenbach / Hochschwarzwald  
Homepage: <http://www.framo-morat.com>

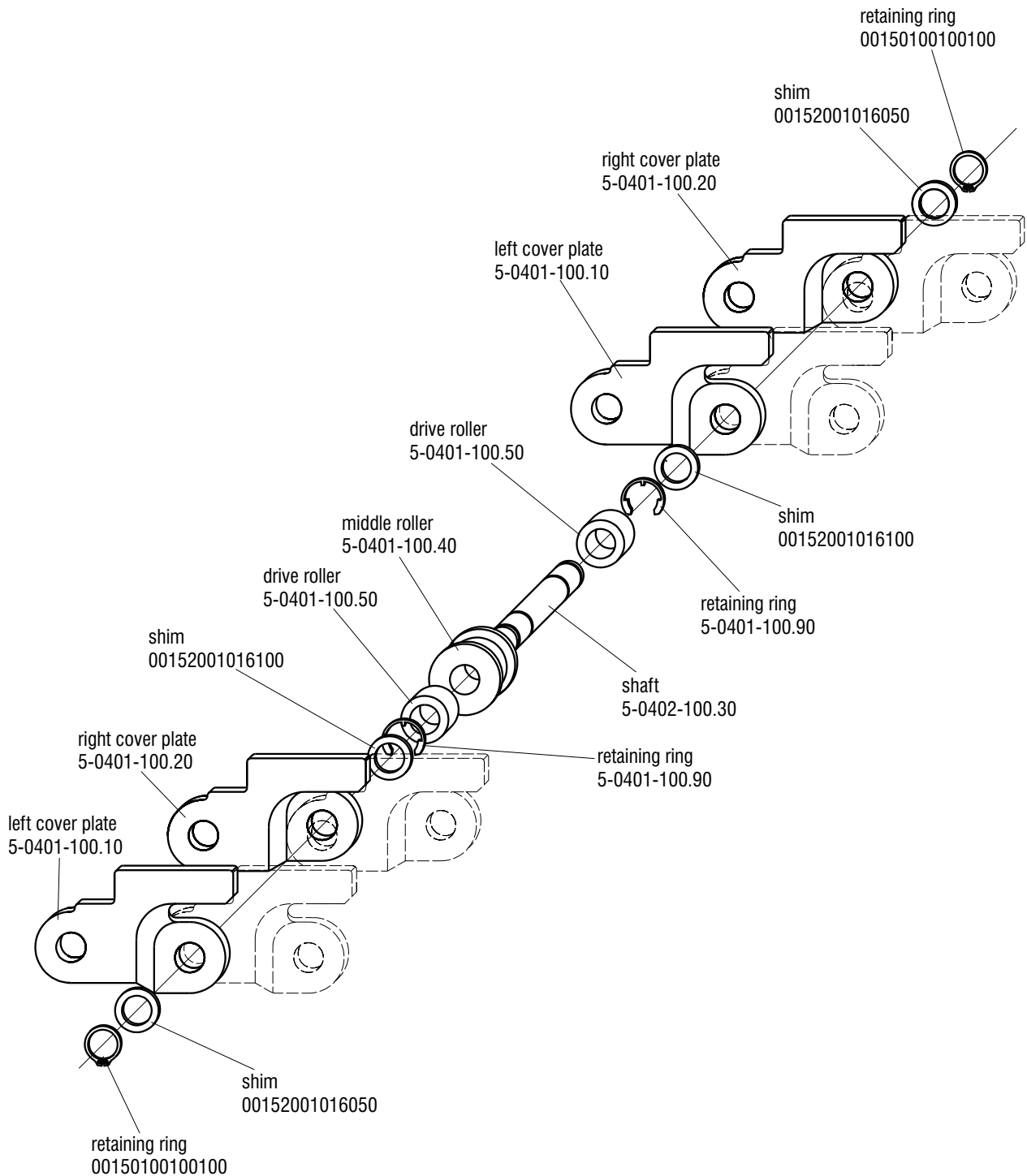
Tel. (07657) 88-0 • Fax (07657) 88-333

E-Mail: [info@framo-morat.com](mailto:info@framo-morat.com)

# Push chain 0403

## Type 40 PSR

### 3.3.3 Assembly of the standard chain link 5-0403-100.00



D5-225e/10.04

Subject to technical changes

Framo - Morat KG (GmbH & Co.)  
Framo -Antriebstechnik

Po.-box 10 • D-79869 Eisenbach / Hochschwarzwald  
Höchst 7 • D-79871 Eisenbach / Hochschwarzwald  
Homepage: <http://www.framo-morat.com>

Tel. (07657) 88-0 • Fax (07657) 88-333

E-Mail: [info@framo-morat.com](mailto:info@framo-morat.com)